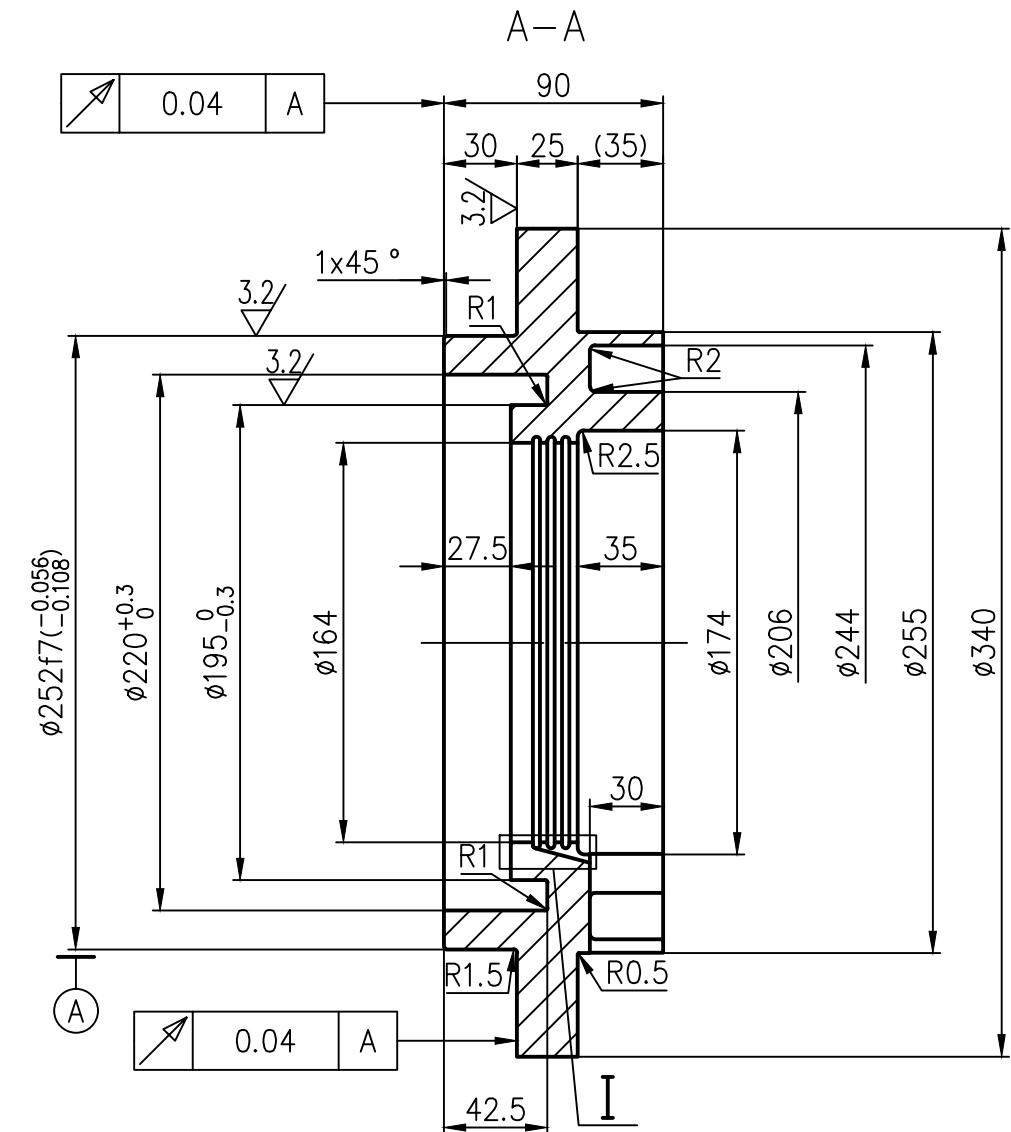
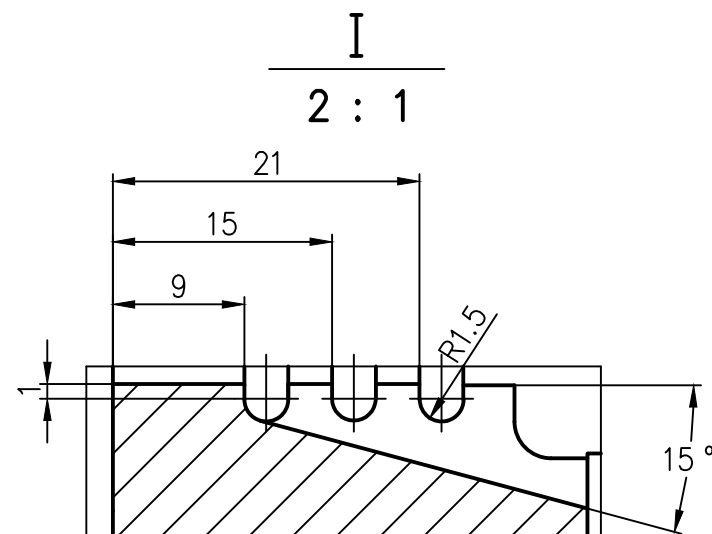
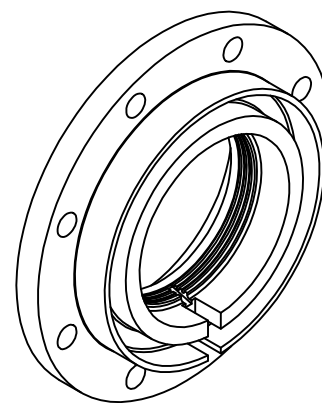


Technical drawing of a circular flange (Figure 1-10). The drawing shows a circular flange with 8 holes, labeled "8- $\phi 22$ 通孔 均布". The outer diameter is $\phi 295$. The flange has a central hole with a diameter of $\phi 15$ and a thickness of 7. The flange is shown in section A-A, with a 45° chamfer and a 22.5° angle indicated. The drawing includes a section line A-A and a dimension line for the central hole.



1. 棱角倒钝.

This document is property of WISDRI and shall neither be reproduced nor communicated to third parties in any way, nor utilized for own purposes, particularly for the execution of what is represented on it, without our written authorization.

证书编号: A142001521			比 例	1:3
室 审			设计阶段	施工图
审 核			材 料	Q235A
设 计	刘 磊		质 量	19.4 kg
制 图	刘 磊		专 业	冶金设备
			保 管 号	

压盖 (一)

修改号/Rev	0	a	b	c	d	e	f
修改人/Name							
日期/Date							



图号: JQG142401-GBS01.2-6

日期	2024.12	页次	1	修改号
----	---------	----	---	-----

种 类	

图幅: 0.250 A1

各专业会签
Approved by